

SELFIE is a Horizon2020 EU project that will contribute to the current state of knowledge on **integrated chronic care** for persons with **multi-morbidity**.

[View this email in your browser](#)



SELFIE Summer 2016




With this second newsletter we'd like to update you on the progress we've made in the SELFIE project. We're nearing the one-year mark and have found this past year to be busy, successful, challenging, and above all – inspirational! In this newsletter we tell you about our accomplishments and describe what we're working on right now. We also link to the executive summary of the first work package deliverable and share the experiences of our Hungarian colleagues as written in their blog.

Be sure to check out the website, as we post news and results regularly: www.selfie2020.eu and feel free to forward this newsletter to others that may be interested in the SELFIE project.

Enjoy your summer holidays!

Kind regards, on behalf of the entire SELFIE consortium,
Maureen Rutten-van Mólken, Fenna Leijten, Melinde Boland, Maaïke Hoedemakers

In this newsletter:

-  *What we've accomplished thus far*
-  *Blog:*
The Hungarian situation
-  *First report online! An executive summary of Work Package 1*
-  *What we're working on*
-  *Get in touch*

Any news?

Do you have interesting news for this newsletter? Feel free to contact us, we are looking forward to hearing from you!

E: info@selfie2020.eu.

You are receiving this email because you signed up via the SELFIE website, are a member of the SELFIE consortium, or we have been in touch about the SELFIE project. Want to change how you receive these emails? You can [update your preferences](#) or [unsubscribe from this list](#).



What we've accomplished thus far



Almost 12 months into the SELFIE project we can look back on a productive year.

Framework

The project began with an extensive scoping review and expert discussions to develop a conceptual framework. This framework can be used to develop, describe, and evaluate integrated care programmes for persons with multi-morbidity.

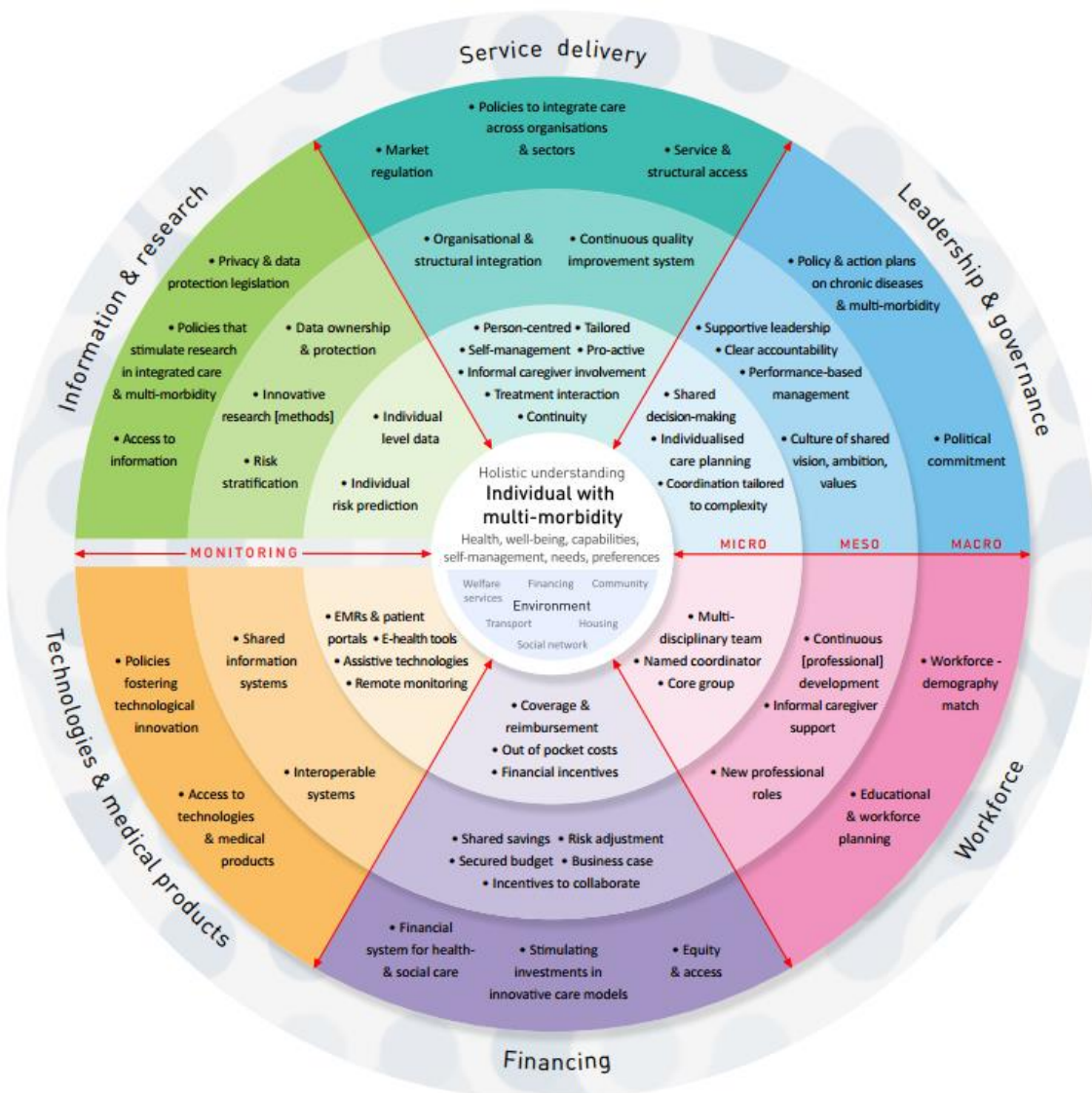


Figure 1: Conceptual framework

(click on the framework to see a fullsize version)

Currently, two linked scientific publications on the framework and scoping review are underway.

Selection of promising integrated care programmes

Parallel to the framework development, each SELFIE partner created a ‘long-list’ of promising integrated care programmes for persons with multi-morbidity being implemented in their respective country. Each partner selected several promising programmes to collaborate with.

The selected programmes are presented in the following map and table:



Austria	<ul style="list-style-type: none"> ● Health Network Tennengau (Gesundheitsnetzwerk Tennengau) ● Sociomedical Centre Liebenau (Sozialmedizinisches Zentrum Liebenau)
Croatia	<ul style="list-style-type: none"> ● GeroS System ● Palliative Care System
Germany	<ul style="list-style-type: none"> ● Casaplus ● Gesundes Kinzigtal
Hungary	<ul style="list-style-type: none"> ● Onconetwork ● Palliative Care Consulting Service (Mobile) Team
Norway	<ul style="list-style-type: none"> ● Learning network ● Medically Assisted Rehabilitation (MAR) Bergen
Spain	<ul style="list-style-type: none"> ● Badalona Serveis Assistencials (BSA) ● Barcelona Esquerre (AISBE)
The Netherlands	<ul style="list-style-type: none"> ● Better together in Amsterdam North (BSiN) ● Proactive Primary Care Approach for Frail Elderly (U-PROFIT) ● Care Chain Frail Elderly (previously called KOMPLEET)*
United Kingdom	<ul style="list-style-type: none"> ● South Somerset Symphony Programme ● Salford – Salford Integrated Care Programme (SICP)/ Salford Together

* Due to additional internal funding, three programmes are being described in The Netherlands.

What we've accomplished thus far – cont'd

Stakeholder advisory board meetings

An international stakeholder advisory board was created with representatives from the '5P' groups: Patients, Partners (i.e., informal caregivers), Professionals, Payers, and Policy makers. This international stakeholder advisory board came together in Vienna at the end of January to discuss a draft version of the framework and the selection of integrated care programmes. Furthermore, each SELFIE-partner country installed a national stakeholder advisory board, also consisting of representatives from the 5P stakeholder groups. These national stakeholder advisory boards met for the first time this spring-summer to also reflect on the framework and integrated care programmes.

Focus groups

These past months each partner organised a focus group with persons with multi-morbidity. The purpose of these focus groups was to discuss what's important, from the patient-perspective, in the care process and what it means to be in 'good health'. The results will help us in designing evaluations of the promising integrated care programmes.



Blog: The Hungarian Situation

Click on the link to *Read more* about the experience of our Hungarian colleagues organising workshops and selecting the promising programme!

"We discussed promising Hungarian ICC programmes for multi-morbidity for evaluation in SELFIE. In addition, we had a brainstorming session on relevant indicators for the planned empirical evaluation. Stakeholders were enthusiastic and actively participated, and raised many useful ideas and recommendations."

[Read more](#)

Executive Summary of WP1

In Work Package 1, a conceptual framework of integrated care for multi-morbidity was developed that aims to guide:

- the selection of promising programmes,
- the systematic description of the selected programmes (WP2), including their funding and payment systems (WP3),
- the empirical evaluation of the programmes (WP4-WP5).

[Read more](#)



What we're working on now...



The promising programmes that were selected (and presented above) are currently being extensively described in order to create 'thick descriptions'.

The purpose of these descriptions (loosely based on the SELFIE framework) is to provide others with extensive information on the programmes so that they can learn from these, e.g., what's being done, how was this accomplished, what seems to work well, and what are barriers to implementation and scaling up? The thick descriptions are being made by conducting extensive document analyses and interviewing relevant stakeholders (again from the 5P groups). These will be completed and made publicly available at the end of 2016.

Setting up comprehensive evaluations

We're currently discussing with each programme whether a comprehensive evaluation can be set up using a Multi-Criteria Decision Analysis (MCDA). Parallel to this, the MCDA methodology is being selected, an inventory of potentially relevant outcomes is being made, and study design possibilities are being explored.

You can find all work packages on our website. Take a look and read what we will be working on!

[Overview of the work packages](#)

Get in touch

If you're interested in learning more about SELFIE, or have suggestions or ideas for collaboration, please feel free to contact us! E: info@selfie2020.eu.

We are also on LinkedIn. Follow us!



Copyright © 2016 Selfie2020, All rights reserved.

This project (SELFIE) has received funding from the European Union's Horizon 2020 research and innovation programme under grant agreement No 634288. The content of this newsletter reflects only the SELFIE groups' views and the European Commission is not liable for any use that may be made of the information contained herein.



Our mailing address is:

Selfie2020

Burgemeester Oudlaan 50

Rotterdam, Zuid-Holland 3000 DR

Netherlands

[Add us to your address book](#)